

# Oregon Ash

*Fraxinus latifolia*

Basket Ash, Water Ash

This fast growing native tree to the Northwest is common in moist, deep soils throughout the Willamette Valley. Oregon Ash is a narrow crowned, straight trunked tree when grown in groves but broad crowned in the open. Oregon Ash is the only ash native to the Northwest and the only western ash with commercially important wood. According to an old superstition, rattlesnakes will not crawl over a branch or stick from this tree. For this reason, leaves were often placed in the sandals of Native Americans. The tree tolerates wet conditions and can be used to revegetate wet lowland areas. Generally an unremarkable tree and not often used in landscaping.



## Identification

### Leaves

Deciduous, opposite, pinnately compound, 5-14" long, 5-9 elliptical leaflets 2-4" each. Margins are entirely or irregularly serrate. Green above and paler below.



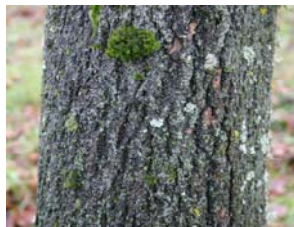
### Flower/Fruit

Dioecious; small, greenish white inconspicuous flowers borne in dense clusters. Dry, flat samaras with terminal wings 1-2" long hang in clumps.



### Bark/Wood

Thin, smooth, and gray-green when young but becoming 1.5" thick, gray-brown, and furrowed with thin, flat ridges. Wood is hard, brittle, and light.



### Form

A medium sized tree commonly 40-80 feet tall. Crown narrow in competition and may be spreading in the open.



### Uses

Oregon Ash is fairly wind resistant and can be grown as a part of a shelterbelt. The tree is valuable for its timber used in making furniture and used as fuel.

### Ethnobotany

The pulverized fresh roots of Oregon Ash were used by some native North American tribes to treat serious wounds. Leaves were placed in sandals as a snake repellent.

### Native Distribution

Moist areas of the Pacific Northwest to Northern California.

### Establishment

Oregon Ash is a heavy feeder requiring rich soil.

## Growing Conditions and Culture

Mature Size

70'Hx40xWx2'dbh

Soils

Acid, Loam, Clay

USDA Zone

6-9

Drought Tolerant?

Moderate

Light Requirements

Part to Full Sun

Inundation Tolerant?

Yes

### Pests/Damaging Agents

Generally pest free.

### Similar Species

Green Ash

Ashes are very similar and difficult to distinguish. Oregon Ash has lighter wood than Green Ash. Native ranges are exclusive.

### Propagation

Seed - cold stratification required.

### Source(s)

Seed from Adair Water System, OR.